

The Midtown Exchange Condos on the Greenway

PPL has commitments on more than sixty percent of the 57 condo and townhouse units it is developing as Midtown Exchange Condos on the Greenway. The housing is part of the larger Midtown Exchange Redevelopment Project on the site of the former Sears building, comprising 360 housing units, the headquarters of Allina Hospitals and Clinics; a Hennepin County service center; a new Sheraton hotel; and the Midtown Global and a new transit facility.

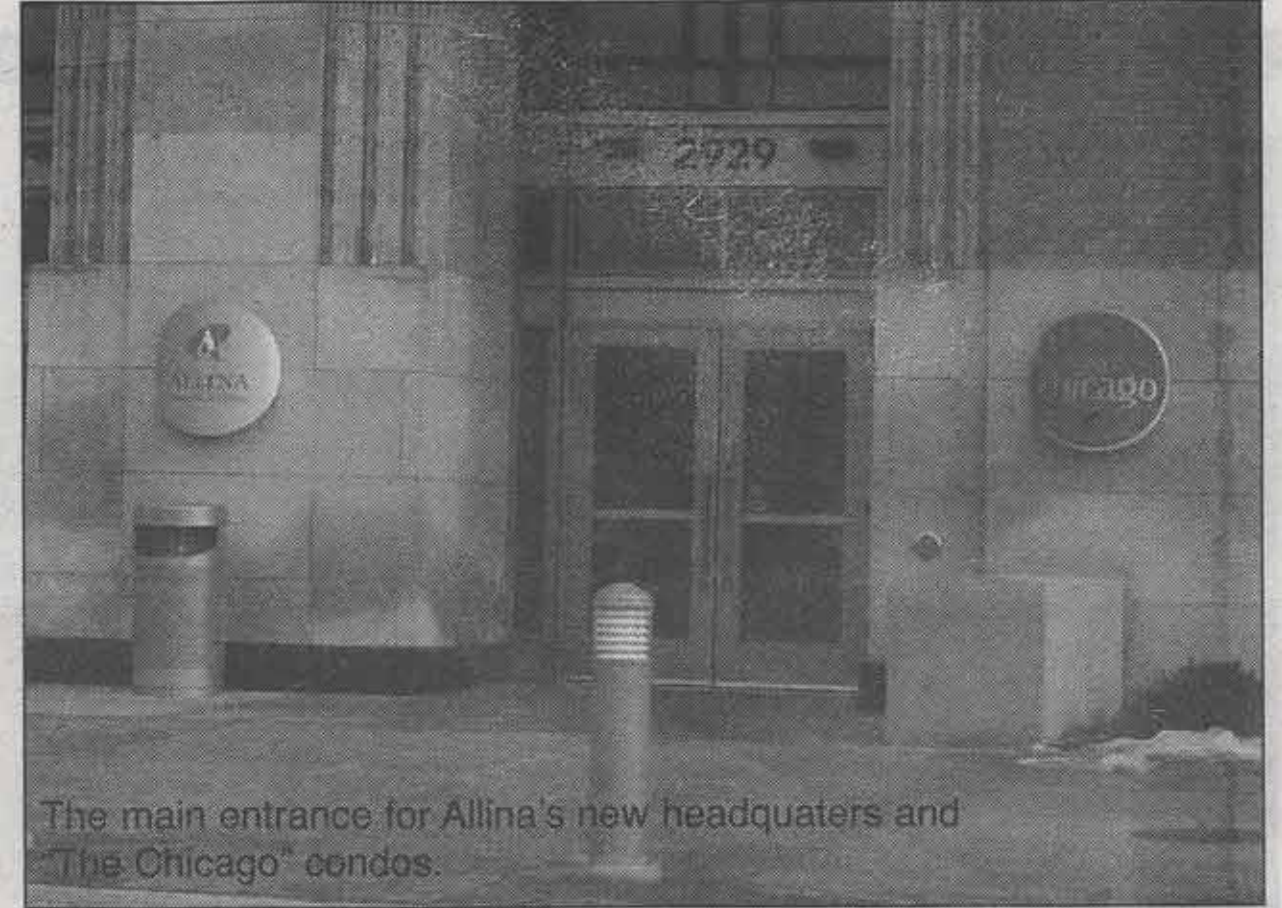
PPL's focus in the



PPL Condo drawing

project is to create housing for the area's workforce

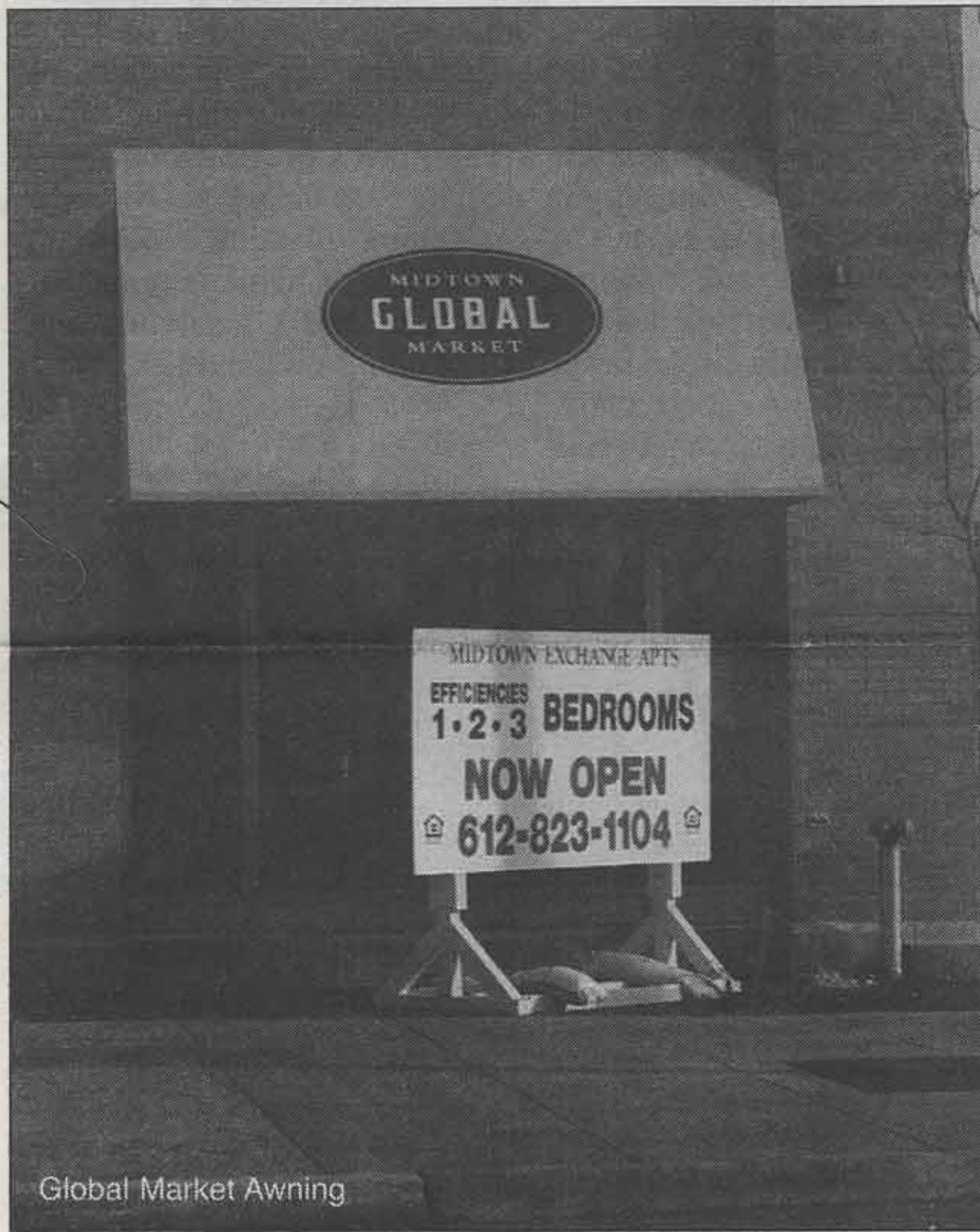
population. Units range in size from 624 to 1,478 square feet, priced from \$89,500 to \$259,900. Sixteen are reserved for buyers with incomes at or below 80% of the area median. Call 612-872-8068 ext. 201 for more information.



The main entrance for Allina's new headquarters and 'The Chicago' condos.



The Sheraton Hotel at Midtown Exchange



Global Market Awning

"I am waiting"

I am waiting for racism to stop!
 I am waiting for my life to began.
 I am waiting for always and forever.
 I am waiting for education to become the main priority.
 I am waiting for love and peace.
 I am waiting for my mom to come back.
 I am waiting for mother nature to fix the chaos that we have created.
 I am waiting for global warming, to teach us yet another lesson.
 I am waiting for the second ice age.
 I am waiting for aliens to invade.
 I am waiting for the answer on why dinosaurs became extinct.
 I am waiting for the war in Iraq to end.
 I waiting for poverty to end.
 I am waiting for oil to be gone.
 I am waiting for a higher source to come and save the human race.
 I am waiting for ignorance to be cured.
 I am waiting right here,
 For always and forever.

Tammy Talbot
Andersen Open, 8th Grade