

**NOW LEASING**

# Maya Commons Affordable Housing

Welcome home to Maya Commons, a new construction affordable housing apartment in the Como neighborhood of Minneapolis.



## Location

1220 Brook Avenue SE  
Minneapolis, MN 55414

## Unit Sizes & Rent

\$762 - \$974/month  
Studio, One, Two Bedrooms

## Resident Amenities

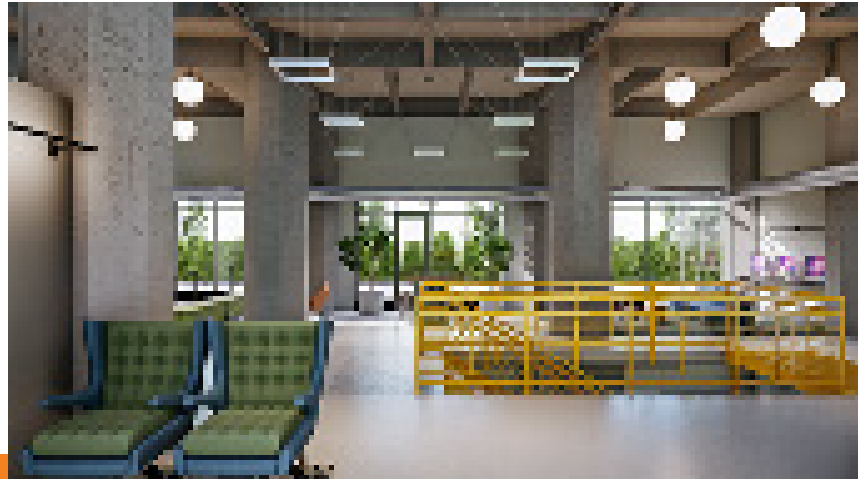
Fitness Center  
Bike Storage  
Limited Enclosed Parking  
Community Spaces

## Resident Eligibility

Household income may be 50% of the Area Median Income (approx. \$36,200 for individual, \$51,700 for family of four).

## Move In

Beginning August 1, 2020



## Live at Maya Commons

Lease Application:  
[www.surveymonkey.com/r/MayaCommons](http://www.surveymonkey.com/r/MayaCommons)

Questions:  
[MayaCommons@ppl-inc.org](mailto:MayaCommons@ppl-inc.org)



**PROJECT FOR PRIDE IN LIVING**

612-455-5100 | 1035 E. Franklin Avenue, Minneapolis, MN 55404 | [ppl@ppl-inc.org](mailto:ppl@ppl-inc.org)